

Instruction

① Technical data

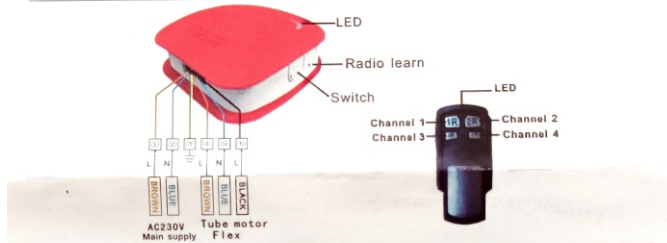
Transmitter: EM series

- > Rated voltage: 12Vdc
- > Battery type: 12V/27A
- > Protection Class: IP 30
- > Radio frequency: 433.92Mhz
- > Working Current: ≤10mA
- > Code: Learning/Rolling Code

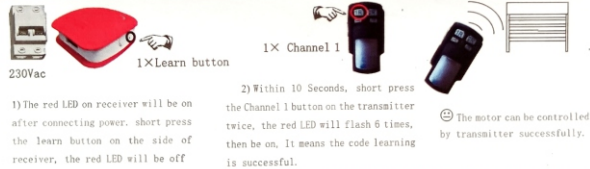
Receiver:

- > Rated voltage: 230Vac/115Vac (50/60Hz)
- > Load power : ≤800W
- > Frequency: 433.92Mhz
- > Be cut off automatically after running for 2 mints.
- > Handle up to 60 remotes at most.
- > Permitted ambient temperature: -10° C ~ +55° C
- > Dimension in mm: 100×100×31mm

② Wires Connect

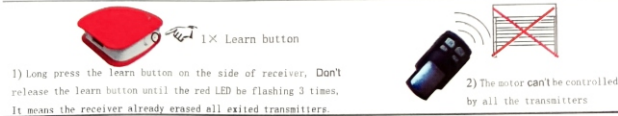


③ Programming the transmitter



Note: As the Channel 1 for example, you can also press channel 2 to 4 buttons of transmitter to control the motor stop and running.

④ Deletion of all transmitters



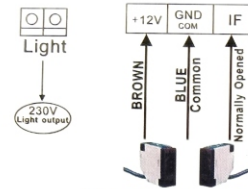
⑤ Change 4 channel model to 1 channel model

1) Press the learn button and the switch button on the side of receiver at the same time, the led will flash three times, it means that the receiver switches to the four channels mode. Do it again, the receiver will work in single mode.

⑥ Opposite direction

1) Long press the switch button on the side of receiver, Don't release until the blue led flash, it means that the motor operate in the opposite direction.

⑦ AUX Function



***Shutter will stop and reopen if the photocell beam is broken during a close cycle.**

⑧

DIP	POS	Description
1 OFF		Photocell stop
1 ON		Photocell resistance and rebound 30s
2 OFF		Single channel (up-stop-down)
2 ON		Four channel (one button open stop down-stop open)
3 OFF		Auto closing function OFF
3 ON		Auto close after up running 90 seconds
4 OFF		Runtime default 2min
4 ON		Runtime is adjustable

DIP4-ON: OPEN DIP4 adjust the open runtime, when the light of receiver is off, long time press the up or down button of transmitter, when the door arrive the position you need, release the hand, turn off DIP4, the light flashed means setting successful.

⚠ Caution

- > Please reprogram if there is interference from other signals leads to the failure.
- > This instruction is compatible with the hand held transmitter.
- > In order to prolong the battery life, please do not long press the emitter's buttons. The better operation is to press the button about 0.5s with 1s interval. It would stop working when the battery is in low power. Please replace proper type one for the emitter in time.
- > The receiver is of high voltage. Keep it away from Water and Children.
- > Permitted ambient temperature: -10° C ~ +55° C.
- > Don't use any cleaning agents to clean the transmitter. This may attack the plastic.
- > Please contact us if you are unable to eliminate a problem.
- > The switch work on point operation way and can control the motor's traveling by up, stop and down button model.